

Screw specifications

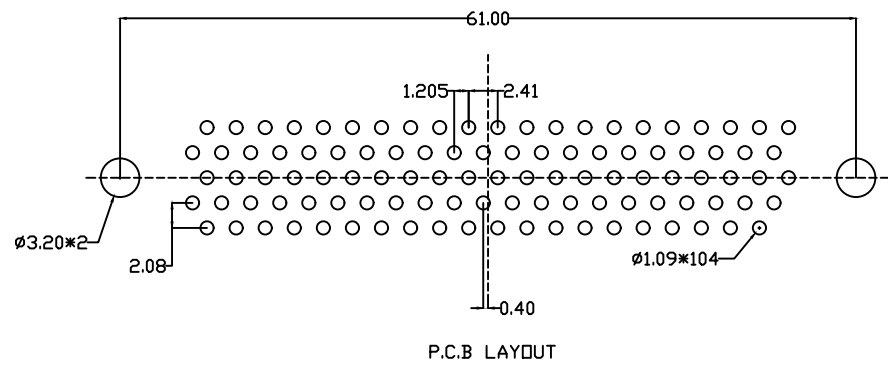
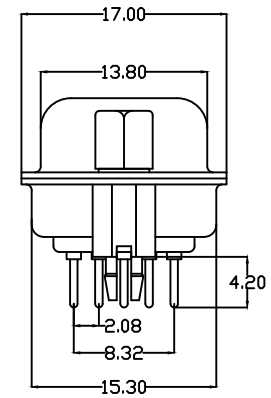
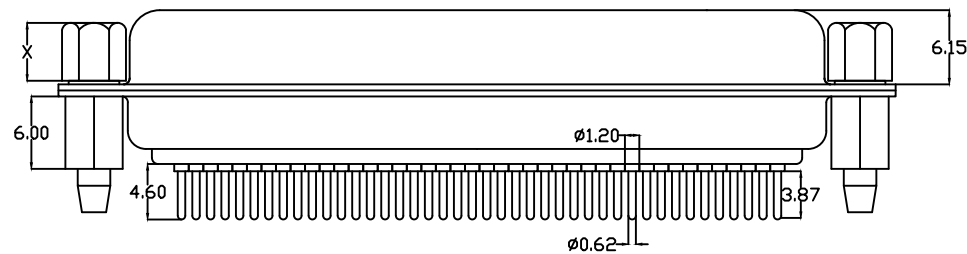
Part Number	Xsize	Internal tooth
5/A	4.8	4#40
6/B	5.8	4#40

Explain:

- characteristic:
 Rated voltage :500V AC MIN
 Rated current :5A
 Contact impedance :30mΩ MAX.
 Insulation impedance :3000MΩ MIN. at 500V DC
 Withstand voltage value :500V AC RMS for 1Minute
 Scope of work : -55°C~+105°C
 Shell salt spray : Above 48H
- Material Science:
 Rubber core : PBT rated
 Car PIN : copper alloy
 Housing : ferroalloy, Front shell nickel plating
 Rear shell tin plating
 Copper pillar : copper alloy, Tinning
 Screw : copper alloy/Ferroalloy, nickel plated

104J AA M X X XX C 1 A X
 1 2 3 4 5 6 7 8 9 10

- Serial number:
104J=HDP head needle riveting lock
- PIN distinguishing:
15=15PIN 26=26PIN 44=44PIN
62=62PIN 78=78PIN AA=104PIN
- Male female distinction:
F=female M=male
- Plastic division:
1=PBT White glue 2=PBT Black glue
- Terminal material differentiation:
H=brass P=Phosphor copper
- Terminal electroplating μ Numerical differentiation:
01=1u gold AA=1.5u gold 02=2u gold....
- Terminal specification differentiation:
C=routine
- Enclosure differentiation:
1=Iron shell
- Copper column division:
A=6.0 copper pillar
- Screw differentiation:
5=4.8 Screw 6=5.8 Screw
A=4.8 Copper screw B=5.8 Copper screw



P.C.B LAYOUT

UNLESS OTHERWISE SPECIFIED TOLERANCE

ANG.	±5°
0.	±0.5
.0	±0.3
.00	±0.2

QIANGTS 深圳市强泰盛电子有限公司
 Shenzhen Qiangtaisheng Electronic Co. LTD.
 TEL.:86-755-82599792 FAX:86-755-27313473

SCALE: AS SHOWN	UNIT: mm	DRAWN NAME: HDP104 bus needle riveting lock
DRAWN WAN	06/17/13	
CHECKED CHEN	06/17/13	
APPROVED CHEN	06/17/13	
DATE	06/17/13	PRODUCT NO. 104JAAMXXXXC1AX
SIZE A4	REV. A	FILE NAME: 104JAAMXXXXC1AX

ECN-20130617001(WAN)	DESCRIPTION	DATE
REV.		