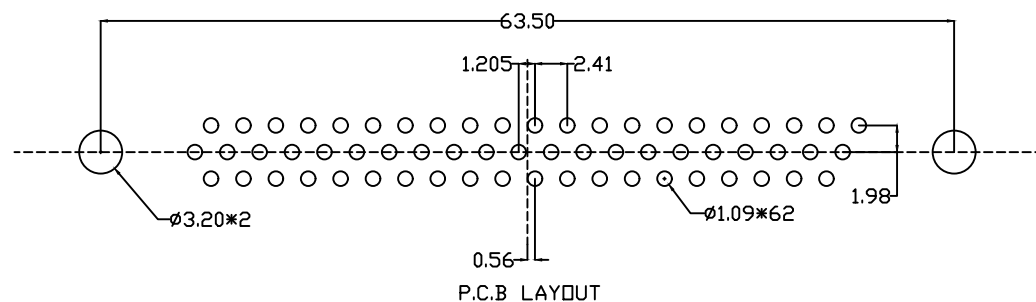
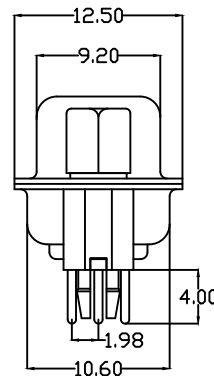
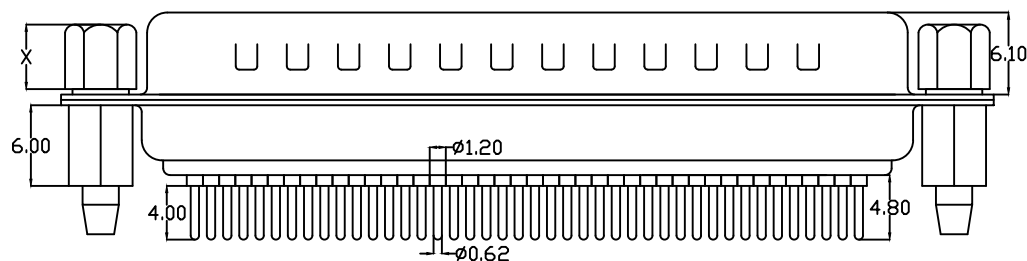


Specification of screws

Part number	Xsize	In the teeth
5/A	4.8	4#40
6/B	5.8	4#40



Explain:

- characteristic:
 - Rated voltage :500V AC MIN
 - Rated current :5A
 - Contact impedance :30mΩ MAX.
 - Insulation impedance :3000MΩMIN. at 500V DC
 - Withstand voltage value :500V AC RMS for 1Minute
 - Scope of work : -55℃~+105℃
 - Shell salt spray : Above 48H
- Material Science:
 - Rubber core : PBT rated
 - Car PIN : copper alloy
 - Housing : ferroalloy/copper alloy/Stainless steel front shell nickel plating and rear shell tin plating/passivation
 - Copper pillar : Copper alloy, tin plated
 - Screw : copper alloy/Ferroalloy, nickel plated

104J 62 M X X XX C X A X
1 2 3 4 5 6 7 8 9 10

- Serial number:
 - 104J=HDP head needle riveting lock
- PIN distinguishing:
 - 15=15PIN 26=26PIN 44=44PIN
 - 62=62PIN 78=78PIN AA=104PIN
- Male female distinction:
 - F=female M=Female male
- Plastic division:
 - 1=PBT White glue 2=PBT Black glue
- Terminal material differentiation:
 - H=brass P=Phosphor copper
- Terminal electroplating μ Numerical differentiation:
 - 01=1u gold AA=1.5u gold 02=2u gold....
- Terminal specification differentiation:
 - C=routine
- Enclosure differentiation:
 - 1=Iron shell 2=Copper shell 3=Stainless steel passivation
 - 4=Stainless steel nickel plating
- Copper column separation:
 - A=6.0 The pillars
- Distinction of screws:
 - 5=4.8 screw 6=5.8 screw
 - A=4.8 Brass screw B=5.8 Brass screw

UNLESS OTHERWISE SPECIFIED TOLERANCE		深圳市强泰盛电子有限公司	
ANG.	±5°	Shenzhen Qiangtaisheng Electronic Co. LTD.	
0.	±0.5	TEL:86-755-82599792 FAX:86-755-27313473	
.0	±0.3		
.00	±0.2		
SCALE: AS SHOWN	UNIT: mm		
DRAWN	WAN	06/17/13	DRAWN NAME:
CHECKED	CHEN	06/17/13	HDP62 bus pin riveting lock
APPROVED	CHEN	06/17/13	PRODUCT NO. 104J62MXXXXCXAX
REV. A	SIZE A4	REV. A	FILE NAME: 104J62MXXXXCXAX

A	ECN-20130617001(WAN)	06/17/13	APPROVED	CHEN	06/17/13	PRODUCT NO.	104J62MXXXXCXAX
REV.	DESCRIPTION	DATE	SIZE	REV.	FILE NAME:	104J62MXXXXCXAX	