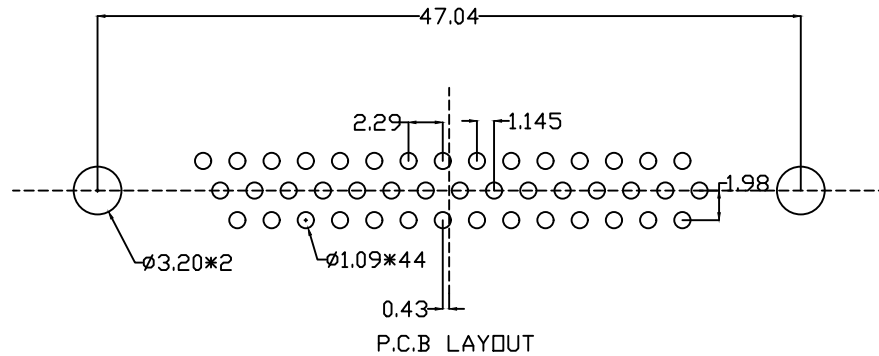
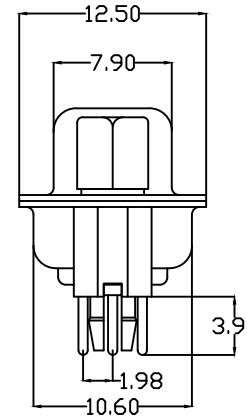
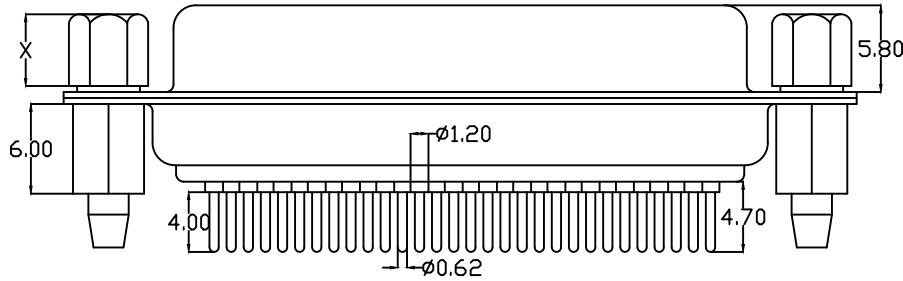


Explain:

- Characteristic:
  - Rated voltage :500V AC MIN
  - Rated current :5A
  - Contact impedance :30mΩ MAX.
  - Insulation impedance :3000MΩ MIN. at 500V DC
  - Withstand voltage value :500V AC RMS for 1Minute
  - Scope of work : -55°C~+105°C
  - Shell salt spray : Above 48H
- Material Science:
  - Rubber core : PBT rated
  - Car PIN : copper alloy
  - Housing : ferroalloy/copper alloy/Stainless steel front shell nickel plating and rear shell tin plating/passivation
  - copper pillar : Copper alloy, tin plated
  - Screw : copper alloy/Ferroalloy, nickel plated

104J 44 F X X XX C X A X  
 1 2 3 4 5 6 7 8 9 10

- Serial number:  
104J=HDP head needle riveting lock
- PIN位区分:  
15=15PIN 26=26PIN 44=44PIN  
62=62PIN 78=78PIN AA=104PIN
- PIN distinguishing:  
F=female M=male
- Plastic division:  
1=PBT White glue 2=PBT Black glue
- Terminal material differentiation:  
H=brass P=Phosphor copper
- Terminal electroplating μ Numerical differentiation:  
01=1u gold AA=1.5u gold 02=2u gold....
- Terminal specification differentiation:  
C=routine
- Enclosure differentiation:  
1=Iron shell 2=Copper shell  
3=Stainless steel passivation  
4=Stainless steel nickel plating
- Copper column division:  
A=6.0 copper pillar
- Screw differentiation:  
5=4.8 Screw 6=5.8 Screw  
A=4.8 Copper screw B=5.8 Copper screw



UNLESS OTHERWISE SPECIFIED TOLERANCE	
ANG.	±5°
0.	±0.5
.0	±0.3
.00	±0.2

**QIANGTS** 深圳市强泰盛电子有限公司  
 Shenzhen Qiangtaisheng Electronic Co. LTD.  
 TEL.:86-755-82599792 FAX:86-755-27313473

SCALE: AS SHOWN UNIT: mm

DRAWN WAN 06/17/13

CHECKED CHEN 06/17/13

APPROVED CHEN 06/17/13

SIZE A4 REV. A

DRAWN NAME: HDP44 mother car needle riveting lock

PRODUCT NO. 104J44FXXXXCXAX

FILE NAME: 104J44FXXXXCXAX

REV.	DESCRIPTION	DATE
A	ECN-20130617001(WAN)	06/17/13