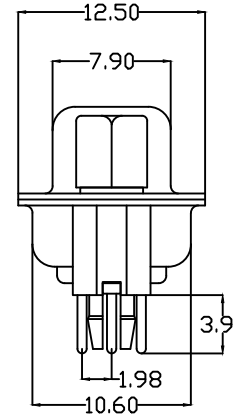
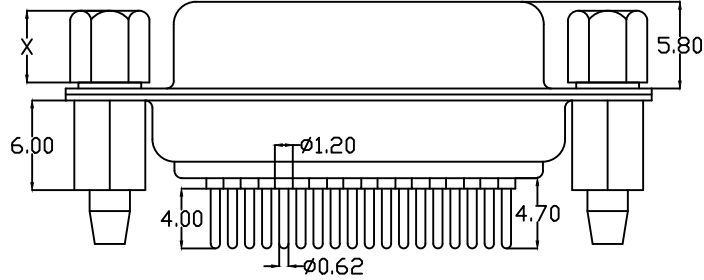


Explain:

- Characteristic:
  - Rated voltage :500V AC MIN
  - Rated current :5A
  - Contact impedance :30mΩ MAX.
  - Insulation impedance :3000MΩ MIN. at 500V DC
  - Withstand voltage value :500V AC RMS for 1Minute
  - Scope of work : -55℃~+105℃
  - Shell salt spray : Above 48H
- Material Science:
  - Rubber core : PBT rated
  - Car PIN : copper alloy
  - Housing : ferroalloy/copper alloy/Stainless steel front shell nickel plating and rear shell tin plating/passivation
  - copper pillar : Copper alloy, tin plated
  - Screw : copper alloy/Ferroalloy, tin plated

104J 26 F X X XX C X A X  
1 2 3 4 5 6 7 8 9 10

- Serial number: 104J=HDP head needle riveting lock
- PIN Differentiation: 15=15PIN 26=26PIN 44=44PIN 62=62PIN 78=78PIN AA=104PIN
- Male female distinction: F=female M=male
- Plastic division: 1=PBT White glue 2=PBT Black glue
- Terminal material differentiation: H=brass P=Phosphor copper
- Terminal electroplating μ Numerical differentiation分: 01=1u gold AA=1.5u gold 02=2u gold....
- Terminal specification differentiation: C=routine
- Enclosure differentiation: 1=Iron shell 2=Copper shell 3=Stainless steel passivation 4=Stainless steel nickel plating
- Copper column division: A=6.0 copper pillar
- Screw differentiation: 5=4.8 Screw 6=5.8 Screw A=4.8 Copper screw B=5.8 Copper screw



### Screwspecifications

Part Number	Xsize	Internal tooth
5/A	4.8	4#40
6/B	5.8	4#40

UNLESS OTHERWISE SPECIFIED TOLERANCE  
ANG. ±5°  
0. ±0.5  
.0 ±0.3  
.00 ±0.2



深圳市强泰盛电子有限公司  
Shenzhen Qiangtaisheng Electronic Co. LTD.  
TEL:86-755-82599792 FAX:86-755-27313473

SCALE: AS SHOWN UNIT: mm

DRAWN WAN 06/17/13

CHECKED CHEN 06/17/13

APPROVED CHEN 06/17/13

DRAWN NAME: HDP26 mother car needle riveting lock

PRODUCT NO. 104J26FXXXXCXAX

FILE NAME: 104J26FXXXXCXAX

REV.	DESCRIPTION	DATE	SIZE	REV.	FILE NAME:
A	ECN-20130617001(WAN)	06/17/13	A4	A	104J26FXXXXCXAX