

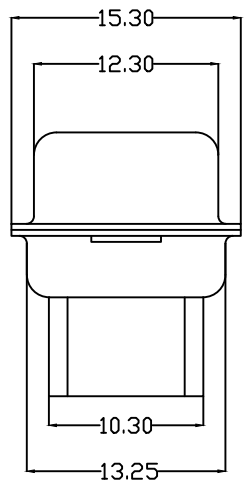
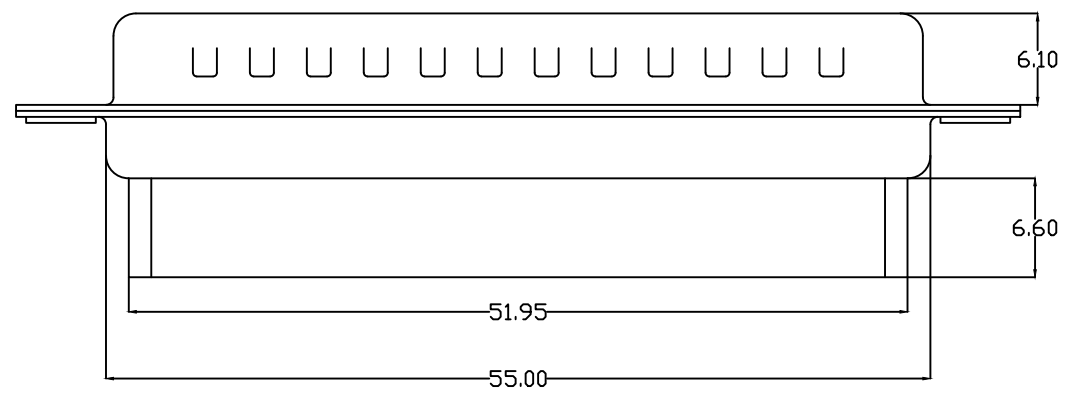
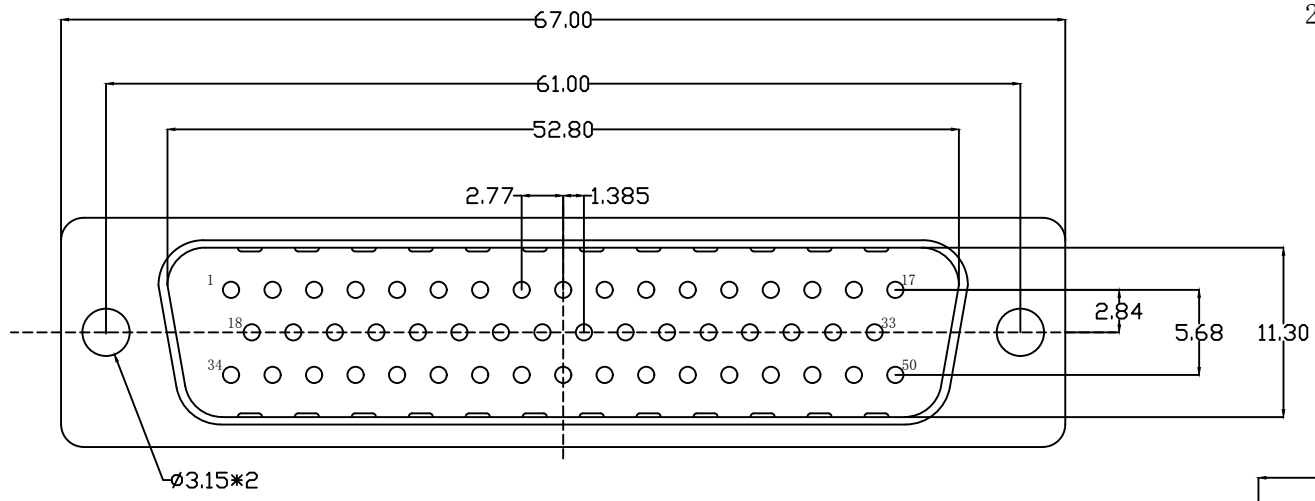
Instructions:

1. Features:

Insulation impedance :3000MΩ MIN. at 500V DC
 Resistance to voltage value :250V AC RMS for 1Minute
 Temperature range : -45℃+85℃


2. Material:

Rubber core : PBT rated (black)
 The shell : ferroalloy/Copper alloy/Stainless steel
 front shell with nickel plating and rear shell with tin
 plating/passivation



210A 50 M 1 X
 1 2 3 4 5

- Series number:
210A=DC end type light hole
- PIN a distinction between:
09=9PIN 15=15PIN 25=25PIN
37=37PIN 50=50PIN
- Male female to distinguish:
F=The mother M=The male
- Classification of Plastics:
1=vinyl
- The shell to distinguish:
A=Iron shell 12H B=The iron shell24H
C=The iron shell 48H
D=Copper shell E=Passivation of
stainless steel
F=Stainless steel nickel plating G=Iron
shell plating

UNLESS OTHERWISE SPECIFIED TOLERANCE		深圳市强泰盛电子有限公司	
ANG.	±5°	Shenzhen Qiangtaisheng Electronic Co. LTD.	
0.	±0.5	TEL:86-755-8259792 FAX:86-755-27313473	
.0	±0.3		
.00	±0.2		
SCALE: AS SHOWN	UNIT: mm	DRAWN NAME: DC50 male end light hole	
DRAWN WAN	07/07/08	PRODUCT NO. 210A50M1X	
CHECKED CHEN	07/07/08	FILE NAME: 210A50M1X	
APPROVED CHEN	07/07/08	DATE 06/17/13	
SIZE A4	REV. A		

REV.	DESCRIPTION	DATE
A	ECN-20130617001(WAN)	06/17/13