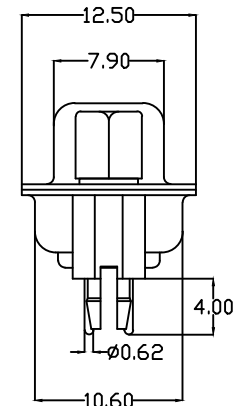
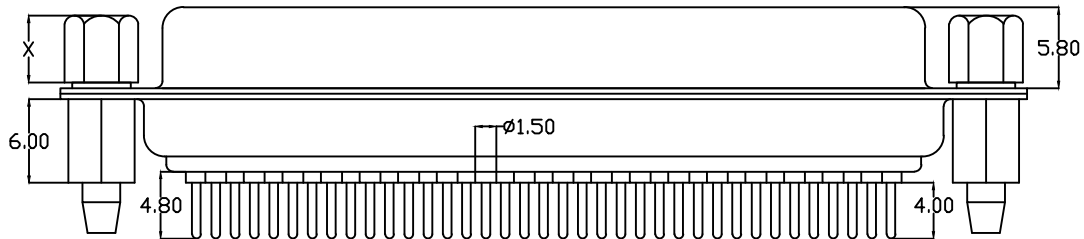


Screw specifications

Part Number	Xsize	Internal tooth
5/A	4.8	4#40
6/B	5.8	4#40

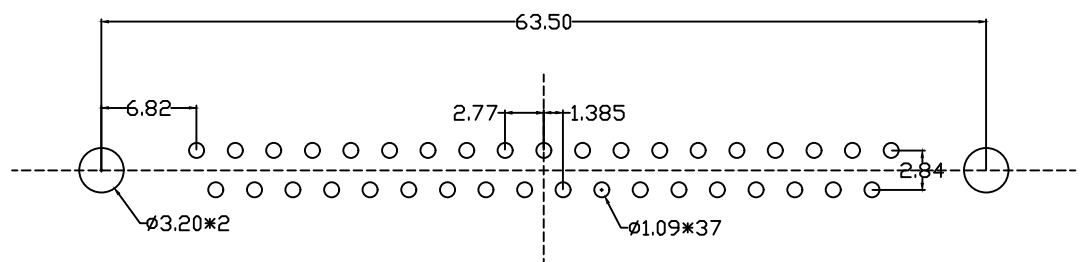
Explain:

- Characteristic:
 - Rated voltage :500V AC MIN
 - Rated voltage :5A
 - Contact impedance :30mΩ MAX.
 - Insulation impedance :3000MΩ MIN. at 500V DC
 - Withstand voltage value :500V AC RMS for 1Minute
 - Scope of work : -55℃~+105℃
 - Shell salt spray : Above 48H
- Material Science:
 - Rubber core : PBT rated
 - Car PIN: copper alloy
 - Housing : ferroalloy/copper alloy/Stainless steel front shell nickel plating and rear shell tin plating
 - /passivation
 - copper pillar : Copper alloy, tin plated
 - Screw : copper alloy/Ferroalloy, nickel plated



204J 37 F X X XX C X A X
 1 2 3 4 5 6 7 8 9 10

- Serial number:
 - 204J=DP head needle riveting lock
- PIN distinguishing:
 - 09=9PIN 15=15PIN 25=25PIN
 - 37=37PIN 50=50PIN
- Male female distinction:
 - F=mother M=male
- Plastic division:
 - 1=PBT White glue 2=PBTBlack glue
- Terminal material differentiation:
 - H=brass P=Phosphor copper
- Terminal electroplating μ Numerical differentiation:
 - 01=1u gold AA=1.5u gold 02=2u gold.....
- Terminal specification differentiation:
 - C=routine
- Enclosure differentiation:
 - 1=Iron shell 2=Copper shell
 - 3=Stainless steel passivation
 - 4=Stainless steel nickel plating
- Nut distinction:
 - A=6.0 copper pillar
- Screw differentiation:
 - 5=4.8 Screw 6=5.8 Screw
 - A=4.8 Copper screw B=5.8 Copper screw



P.C.B LAYOUT

UNLESS OTHERWISE SPECIFIED TOLERANCE	ANG. ±5'	0. ±0.5	.0 ±0.3	.00 ±0.2
SCALE: AS SHOWN	UNIT: mm	深圳市强泰盛电子有限公司 Shenzhen Qiangtaisheng Electronic Co. LTD. TEL.:86-755-8259792 FAX:86-755-27313473		

SCALE: AS SHOWN	UNIT: mm	DRAWN NAME:
DRAWN WAN	06/17/13	DP37 mother car needle riveting lock
CHECKED CHEN	06/17/13	PRODUCT NO. 204J37FXXXXCXAX
APPROVED CHEN	06/17/13	FILE NAME: 204J37FXXXXCXAX
REV. A	ECN-20130617001(WAN)	DATE 06/17/13
REV.	DESCRIPTION	DATE