

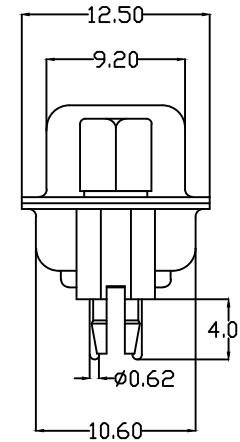
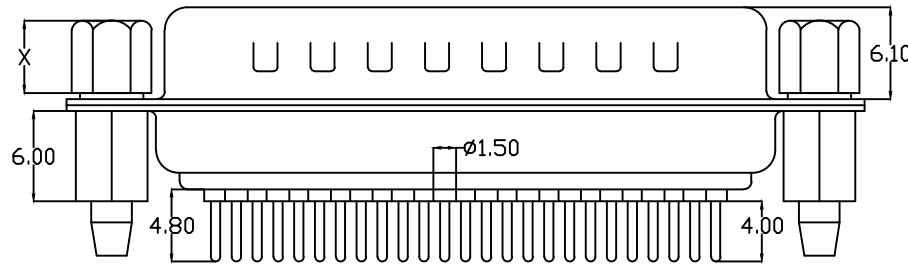
Instructions:

1.Features:

- The rated voltage :500V AC MIN
- Rated current :5A
- Contact impedance :30mΩ MAX.
- Insulation impedance :3000MΩ MIN. at 500V DC
- Resistance to voltage value :500V AC RMS for 1Minute
- The scope of work : -55℃~+105℃
- The shell salt fog : More than 48 H

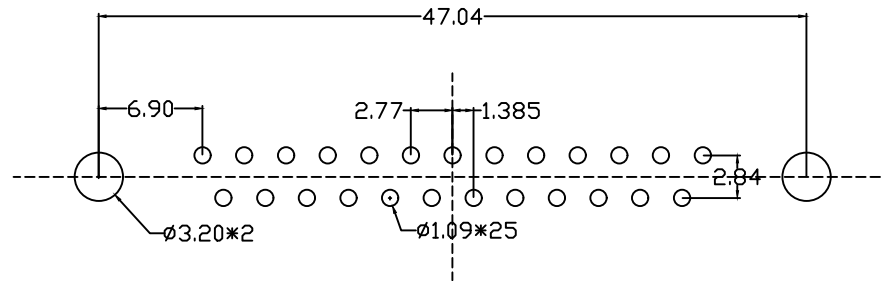
2.Material:

- Rubber core : PBT rated
- Car PIN : Copper alloy
- The shell : Ferroalloy/Copper alloy/ Stainless steel front shell with nickel plating and rear shell with tin plating/passivation
- The pillars : Copper alloy, Tin plating
- Screw : Copper alloy/Iron alloy, nickel plated



204J 25 M X X XX C X A X
 1 2 3 4 5 6 7 8 9 10

- Series number:
204J=DP head car pin riveting lock
- PIN a distinction between:
09=9PIN 15=15PIN 25=25PIN
37=37PIN 50=50PIN
- Male female to distinguish:
F=The mother M=The male
- Plastic to distinguish:
1=PBT White glue 2=PBT vinyl
- Terminal material differentiation:
H=brass P=Phosphor copper
- The terminal electroplating μs are differentiated:
01=1u gold AA=1.5u gold 02=2u gold....
- Terminal Specifications Distinction:
C=conventional
- The shell to distinguish:
1=The iron shell 2=Copper shell
3=Passivation of stainless steel
4=Stainless steel nickel plating
- Nut to distinguish:
A=6.0 The pillars
- Screw to distinguish:
5=4.8 screw 6=5.8 screw
A=4.8 Copper screw B=5.8 Copper screw



P.C.B LAYOUT

UNLESS OTHERWISE SPECIFIED TOLERANCE	
ANG.	±5°
0.	±0.5
.0	±0.3
.00	±0.2

QIANGTS 深圳市强泰盛电子有限公司
 Shenzhen Qiangtaisheng Electronic Co. LTD.
 TEL:86-755-8259792 FAX:86-755-27313473

SCALE: AS SHOWN	UNIT: mm
DRAWN WAN	06/17/13
CHECKED CHEN	06/17/13
APPROVED CHEN	06/17/13
SIZE A4	REV. A

DRAWN NAME:	DP25 bus pin riveting
PRODUCT NO.	204J25MXXXXCXAX
FILE NAME:	204J25MXXXXCXAX

REV.	DESCRIPTION	DATE	SIZE	REV.	FILE NAME:
A	ECN-20130617001(WAN)	06/17/13	A4	A	204J25MXXXXCXAX