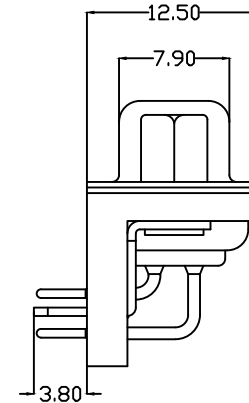


P.C.B LAYOUT

| Nut specifications | | | |
|--------------------|--------------|-------|--------------|
| | Part Numbers | Xsize | In the teeth |
| X | A | 4.8 | 4#40 |
| | B | 5.8 | 4#40 |



Instructions:

1. Features:

- The rated voltage :500V AC MIN
- Rated current :5A
- Contact impedance :30mΩ MAX.
- Insulation impedance :3000MΩ MIN. at 500V DC
- Resistance to voltage value :500V AC RMS for 1Minute
- The scope of work : -55°C~+105°C
- The shell salt fog : More than 48 H

2. Material:

- Rubber core : PBT rated
- Car PIN : Copper alloy
- The shell : ferroalloy/Copper alloy/ Stainless steel front shell with nickel plating and rear shell with tin plating/passivation
- Stents : PBT/LCP, black
- The harpoon : ferroalloy/Copper alloy, nickel plated
- Nut : Copper alloy, Nickel plating

207H 25 F X X XX C X X X X
1 2 3 4 5 6 7 8 9 10 11

1. Series number:

207H=DR Needle bending 7.2 Front rivet hollow nut with bracket

2. PIN a distinction between:

09=9PIN 15=15PIN 25=25PIN
37=37PIN 50=50PIN

3. Male female to distinguish:

F=The mother M=The male

4. Plastic to distinguish:

1=PBT White glue 2=PBT vinyl

5. Terminal material differentiation:

H=brass P=Phosphor copper

6. The terminal electroplating μs are differentiated:

01=1u gold AA=1.5u gold 02=2u gold....

7. Terminal Specifications Distinction:

C=conventional

8. The shell to distinguish:

1=The iron shell 2=Copper shell

3=Passivation of stainless steel

4=Stainless steel nickel plating

9. Support to distinguish:

A=PBT B=LCP

10. The harpoon to distinguish:

1=Iron spear 12H 2=Iron spear 24H

3=Bronze spear

11. Nut to distinguish:

A=4.8 nut B=5.8 nut

| UNLESS OTHERWISE SPECIFIED TOLERANCE | |
|--------------------------------------|------|
| ANG. | ±5° |
| 0. | ±0.5 |
| .0 | ±0.3 |
| .00 | ±0.2 |

SCALE: AS SHOWN UNIT: mm

DRAWN WAN 06/17/13

CHECKED CHEN 06/17/13

APPROVED CHEN 06/17/13

QIANGTS 深圳市强泰盛电子有限公司
Shenzhen Qiangtaisheng Electronic Co. LTD.
TEL:86-755-82599792 FAX:86-755-27313473

| REV. | DESCRIPTION | DATE | SIZE | REV. | FILE NAME: |
|------|----------------------|----------|------|------|------------------|
| A | ECN-20130617001(WAN) | 06/17/13 | A4 | A | 207H25FXXXXCXXXX |