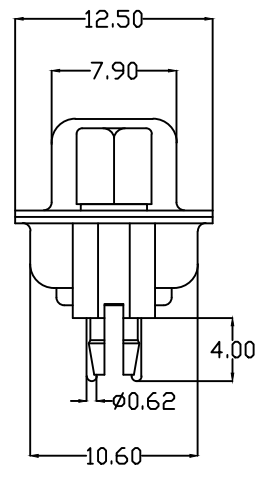
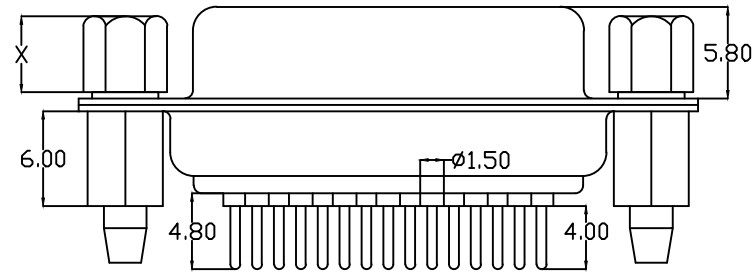


P.C.B LAYOUT



Screw specification			
Part Number	Xsize	Internal tooth	
5/A	4.8	4#40	
6/B	5.8	4#40	

Instructions:

- Features:
 - The rated voltage :500V AC MIN
 - Rated current :5A
 - Contact impedance :30mΩ MAX.
 - Insulation impedance :3000MΩMIN. at 500V DC
 - Resistance to voltage value :500V AC RMS for 1Minute
 - The scope of work: -55℃~+105℃
 - The shell salt fog : More than 48 H
- Material:
 - Rubber core : PBT rated
 - Car PIN : Copper alloy
 - The shell : ferroalloy/Copper alloy/ Stainless steel nickel front and tin back/ passivation
 - The pillars : Copper alloy, tin plated
 - Screw : Copper alloy/Iron alloy, nickel plated

204J 15 F X X XX C X A X
 1 2 3 4 5 6 7 8 9 10

- Series number:
 - 204J=DP head rivet pin
- PIN a distinction between:
 - 09=9PIN 15=15PIN 25=25PIN
 - 37=37PIN 50=50PIN
- Male female to distinguish:
 - F=The mother M=The male
- Plastic to distinguish:
 - 1=PBT White glue 2=PBT vinyl
- Terminal material distinction:
 - H=brass P=Phosphor copper
- Distinguish the number of terminals plated μ :
 - 01=1u gold AA=1.5u gold 02=2u gold.....
- Distinction of Terminal Specifications:
 - C=conventional
- The shell to distinguish:
 - 1=The iron shell 2=Copper shell
 - 3=Passivation of stainless steel
 - 4=Stainless steel nickel plating
- Nut to distinguish:
 - A=6.0 The pillars
- Screw to distinguish:
 - 5=4.8 Iron screw 6=5.8 Iron screw
 - A=4.8 Copper screw B=5.8 Copper screw

UNLESS OTHERWISE SPECIFIED TOLERANCE	
ANG.	±5°
0.	±0.5
.0	±0.3
.00	±0.2

QIANGTS 深圳市强泰盛电子有限公司
 Shenzhen Qiangtaisheng Electronic Co. LTD.
 TEL:86-755-82599792 FAX:86-755-27313473

SCALE: AS SHOWN	UNIT: mm
DRAWN WAN	06/17/13
CHECKED CHEN	06/17/13
APPROVED CHEN	06/17/13

DRAWN NAME:	DP15 female car pin rivet
PRODUCT NO.	204J15FXXXXCXAX
FILE NAME:	204J15FXXXXCXAX

REV.	DESCRIPTION	DATE	SIZE	REV.
A	ECN-20130617001(WAN)	06/17/13	A4	A